

Keep Up With Your Treatment and Keep Track of Your Eye Pressure

Xalatan[®]
(latanoprost ophthalmic solution) 0.005%

Get into the habit of applying your XALATAN eye drops at the same time every day

DAY 1	DAY 2	DAY 3	DAY 4	DAY 5	DAY 6	DAY 7
Drops <input type="checkbox"/>	Drops <input type="checkbox"/>	Drops <input type="checkbox"/>	Drops <input type="checkbox"/>	Drops <input type="checkbox"/>	Drops <input type="checkbox"/>	Drops <input type="checkbox"/>
Time: _____	Time: _____	Time: _____	Time: _____	Time: _____	Time: _____	Time: _____
DAY 8	DAY 9	DAY 10	DAY 11	DAY 12	DAY 13	DAY 14
Drops <input type="checkbox"/>	Drops <input type="checkbox"/>	Drops <input type="checkbox"/>	Drops <input type="checkbox"/>	Drops <input type="checkbox"/>	Drops <input type="checkbox"/>	Drops <input type="checkbox"/>
Time: _____	Time: _____	Time: _____	Time: _____	Time: _____	Time: _____	Time: _____
DAY 15	DAY 16	DAY 17	DAY 18	DAY 19	DAY 20	DAY 21
Drops <input type="checkbox"/>	Drops <input type="checkbox"/>	Drops <input type="checkbox"/>	Drops <input type="checkbox"/>	Drops <input type="checkbox"/>	Drops <input type="checkbox"/>	Drops <input type="checkbox"/>
Time: _____	Time: _____	Time: _____	Time: _____	Time: _____	Time: _____	Time: _____
DAY 22	DAY 23	DAY 24	DAY 25	DAY 26	DAY 27	DAY 28
Drops <input type="checkbox"/>	Drops <input type="checkbox"/>	Drops <input type="checkbox"/>	Drops <input type="checkbox"/>	Drops <input type="checkbox"/>	Drops <input type="checkbox"/>	Drops <input type="checkbox"/>
Time: _____	Time: _____	Time: _____	Time: _____	Time: _____	Time: _____	Time: _____
DAY 29	DAY 30	DAY 31	NEXT DR. VISIT	Notes: _____ _____ _____		
Drops <input type="checkbox"/>	Drops <input type="checkbox"/>	Drops <input type="checkbox"/>				
Time: _____	Time: _____	Time: _____				

Take this helpful chart to your next doctor appointment so you can start keeping a record of your eye pressure at each visit.

My initial eye pressure: **R** _____ **L** _____
(**R** = Right Eye Pressure; **L** = Left Eye Pressure)

DATE: _____		DATE: _____	
EYE PRESSURE		EYE PRESSURE	
R	L	R	L
DATE: _____		DATE: _____	
EYE PRESSURE		EYE PRESSURE	
R	L	R	L

Visit www.XALATAN.com
for more information

Important Safety Information and Indication

XALATAN is not recommended in patients with a known hypersensitivity to latanoprost, benzalkonium chloride, or any other ingredients in this product.

XALATAN may slowly cause darkening of the eye color, darkening of the eyelid and eyelashes, and increased growth and thickness of eyelashes. Color changes may increase as long as XALATAN is administered, and eye color changes are likely to be permanent.

Please see Important Safety Information and Indication continued on next page and accompanying Full Prescribing Information.

How to Administer Your XALATAN Eye Drops

Xalatan[®]
(latanoprost ophthalmic solution) 0.005%

Follow these 5 steps to properly put in your eye drops:

1. Wash and dry your hands
2. Find a comfortable seat and tilt your head back slightly
3. Gently pull down your bottom eyelid
4. Use your other hand to hold the bottle and put the drop into the space between the lower lid and the eye (*repeat steps 3 and 4 on your second eye*)
5. Close your eyes and gently press on your tear ducts—the inner corners of the eyes—for 2 or 3 minutes; this stops the blinking action from draining the drops away. If you're taking more than one eye drop medication, wait 5 minutes before using the second eye drop medication



To prevent infection or contamination of the solution, try not to allow the end of the bottle to make contact with the eye or anything else. And always remember to replace the bottle cap after applying the drops.

If you find it difficult to do this yourself, ask someone to follow these steps and administer the eye drops for you. Special devices are also available to improve administration of eye drops. Talk to your doctor or pharmacist.

Important Safety Information (continued)

There have been reports of bacterial keratitis associated with the use of multiple-dose containers of topical ophthalmic products.

Contact lenses should be removed prior to the administration of XALATAN. Contact lenses can be reinserted 15 minutes following administration of XALATAN.

If more than one topical eye medication is used, the drugs should be administered at least five minutes apart.

The most common side effects for XALATAN may include blurred vision, burning and stinging, eye redness, eye itching, the feeling of something in the eye, increased darkening of eye color, irritation of the clear front surface of the eye, or cold or flu.

Indication

XALATAN[®] (latanoprost ophthalmic solution) is a prescription medication for the treatment of high eye pressure/intraocular pressure (IOP) in people with open-angle glaucoma or ocular hypertension.

Please see accompanying Full Prescribing Information.

HIGHLIGHTS OF PRESCRIBING INFORMATION

These highlights do not include all the information needed to use XALATAN safely and effectively. See full prescribing information for XALATAN.

XALATAN® (latanoprost ophthalmic solution) 0.005%

Initial U.S. Approval: 1996

INDICATIONS AND USAGE

XALATAN is a prostaglandin $F_{2\alpha}$ analogue indicated for the reduction of elevated intraocular pressure in patients with open-angle glaucoma or ocular hypertension. (1)

DOSAGE AND ADMINISTRATION

One drop in the affected eye(s) once daily in the evening. (2)

DOSAGE FORMS AND STRENGTHS

Ophthalmic solution containing 50 mcg/mL latanoprost (0.005%). (3)

CONTRAINDICATIONS

Known hypersensitivity to latanoprost, benzalkonium chloride or any other ingredients in this product. (4)

WARNINGS AND PRECAUTIONS

- Pigmentation: pigmentation of the iris, periorbital tissue (eyelid) and eyelashes can occur. Iris pigmentation likely to be permanent. (5.1)
- Eyelash Changes: gradual change to eyelashes including increased length, thickness and number of lashes. Usually reversible. (5.2)

ADVERSE REACTIONS

Most common adverse reactions ($\geq 4\%$) from clinical trials are blurred vision, burning and stinging, conjunctival hyperemia, foreign body sensation, itching, increased pigmentation of the iris, punctate keratitis, and upper respiratory tract infection/nasopharyngitis/influenza. (6)

To report SUSPECTED ADVERSE REACTIONS, contact Pfizer at 1-800-438-1985 or FDA at 1-800-FDA-1088 or www.fda.gov/medwatch.

DRUG INTERACTIONS

In vitro studies have shown that precipitation occurs when eye drops containing thimerosal are mixed with XALATAN. If such drugs are used, they should be administered at least 5 minutes apart. (7)

See 17 for PATIENT COUNSELING INFORMATION.

Revised: 4/2017

FULL PRESCRIBING INFORMATION: CONTENTS*

1 INDICATIONS AND USAGE

2 DOSAGE AND ADMINISTRATION

3 DOSAGE FORMS AND STRENGTHS

4 CONTRAINDICATIONS

5 WARNINGS AND PRECAUTIONS

- 5.1 Pigmentation
- 5.2 Eyelash Changes
- 5.3 Intraocular Inflammation
- 5.4 Macular Edema
- 5.5 Herpetic Keratitis
- 5.6 Bacterial Keratitis
- 5.7 Use with Contact Lenses

6 ADVERSE REACTIONS

- 6.1 Clinical Trials Experience
- 6.2 Postmarketing Experience

7 DRUG INTERACTIONS

8 USE IN SPECIFIC POPULATIONS

- 8.1 Pregnancy
- 8.3 Nursing Mothers
- 8.4 Pediatric Use
- 8.5 Geriatric Use

10 OVERDOSAGE

11 DESCRIPTION

12 CLINICAL PHARMACOLOGY

- 12.1 Mechanism of Action
- 12.2 Pharmacodynamics
- 12.3 Pharmacokinetics

13 NONCLINICAL TOXICOLOGY

- 13.1 Carcinogenesis, Mutagenesis, Impairment of Fertility

14 CLINICAL STUDIES

- 14.1 Elevated Baseline IOP
- 14.2 Progression of Increased Iris Pigmentation

16 HOW SUPPLIED/STORAGE AND HANDLING

17 PATIENT COUNSELING INFORMATION

*Sections or subsections omitted from the full prescribing information are not listed

FULL PRESCRIBING INFORMATION

1 INDICATIONS AND USAGE

XALATAN is indicated for the reduction of elevated intraocular pressure in patients with open-angle glaucoma or ocular hypertension.

2 DOSAGE AND ADMINISTRATION

The recommended dosage is one drop in the affected eye(s) once daily in the evening. If one dose is missed, treatment should continue with the next dose as normal.

The dosage of XALATAN should not exceed once daily; the combined use of two or more prostaglandins, or prostaglandin analogs including XALATAN is not recommended. It has been shown that administration of these prostaglandin drug products more than once daily may decrease the intraocular pressure (IOP) lowering effect or cause paradoxical elevations in IOP.

Reduction of the IOP starts approximately 3 to 4 hours after administration and the maximum effect is reached after 8 to 12 hours.

XALATAN may be used concomitantly with other topical ophthalmic drug products to lower IOP. If more than one topical ophthalmic drug is being used, the drugs should be administered at least five (5) minutes apart. Contact lenses should be removed prior to the administration of XALATAN, and may be reinserted 15 minutes after administration

3 DOSAGE FORMS AND STRENGTHS

Sterile ophthalmic solution containing 50 mcg/mL latanoprost.

4 CONTRAINDICATIONS

Known hypersensitivity to latanoprost, benzalkonium chloride, or any other ingredients in this product.

5 WARNINGS AND PRECAUTIONS

5.1 Pigmentation

XALATAN has been reported to cause changes to pigmented tissues. The most frequently reported changes have been increased pigmentation of the iris, periorbital tissue (eyelid), and eyelashes. Pigmentation is expected to increase as long as latanoprost is administered.

The pigmentation change is due to increased melanin content in the melanocytes rather than to an increase in the number of melanocytes. After discontinuation of latanoprost, pigmentation of the iris is likely to be permanent, while pigmentation of the periorbital tissue and eyelash changes have been reported to be reversible in some patients. Patients who receive treatment should be informed of the possibility of increased pigmentation. Beyond 5 years the effects of increased pigmentation are not known [see *Clinical Studies (14.2)*].

Iris color change may not be noticeable for several months to years. Typically, the brown pigmentation around the pupil spreads concentrically towards the periphery of the iris and the entire iris or parts of the iris become more brownish. Neither nevi nor freckles of the iris appear to be affected by treatment. While treatment with XALATAN can be continued in patients who develop noticeably increased iris pigmentation, these patients should be examined regularly [see *Patient Counseling Information (17)*].

5.2 Eyelash Changes

XALATAN may gradually change eyelashes and vellus hair in the treated eye; these changes include increased length, thickness, pigmentation, the number of lashes or hairs, and misdirected growth of eyelashes. Eyelash changes are usually reversible upon discontinuation of treatment [see *Patient Counseling Information (17)*].

5.3 Intraocular Inflammation

XALATAN should be used with caution in patients with a history of intraocular inflammation (iritis/uveitis) and should generally not be used in patients with active intraocular inflammation because inflammation may be exacerbated.

5.4 Macular Edema

Macular edema, including cystoid macular edema, has been reported during treatment with XALATAN. XALATAN should be used with caution in aphakic patients, in pseudophakic patients with a torn posterior lens capsule, or in patients with known risk factors for macular edema.

5.5 Herpetic Keratitis

Reactivation of Herpes Simplex keratitis has been reported during treatment with XALATAN. XALATAN should be used with caution in patients with a history of herpetic keratitis. XALATAN should be avoided in cases of active herpes simplex keratitis because inflammation may be exacerbated.

5.6 Bacterial Keratitis

There have been reports of bacterial keratitis associated with the use of multiple-dose containers of topical ophthalmic products. These containers had been inadvertently contaminated by patients who, in most cases, had a concurrent corneal disease or a disruption of the ocular epithelial surface [see Patient Counseling Information (17)].

5.7 Use with Contact Lenses

Contact lenses should be removed prior to the administration of XALATAN, and may be reinserted 15 minutes after administration.

6 ADVERSE REACTIONS

The following adverse reactions were reported in postmarketing experience and are discussed in greater detail in other sections of the label:

- Iris pigmentation changes [see Warnings and Precautions (5.1)]
- Eyelid skin darkening [see Warnings and Precautions (5.1)]
- Eyelash changes (increased length, thickness, pigmentation, and number of lashes) [see Warnings and Precautions (5.2)]
- Intraocular inflammation (iritis/uveitis) [see Warnings and Precautions (5.3)]
- Macular edema, including cystoid macular edema [see Warnings and Precautions (5.4)]

6.1 Clinical Trials Experience

Because clinical trials are conducted under widely varying conditions, the adverse reaction rates observed in the clinical studies of a drug cannot be directly compared to rates in the clinical trials of another drug and may not reflect the rates observed in clinical practice.

XALATAN was studied in three multicenter, randomized, controlled clinical trials. Patients received 50 mcg/mL XALATAN once daily or 5 mg/mL active-comparator (timolol) twice daily. The patient population studied had a mean age of 65±10 years. Seven percent of patients withdrew before the 6-month endpoint.

Table 1: Ocular Adverse Reactions and Ocular Signs/Symptoms Reported by 5-15% of Patients Receiving Latanoprost

Symptom/Finding	Adverse Reactions (incidence (%))	
	Latanoprost (n=460)	Timolol (n=369)
Foreign body sensation	13	8
Punctate keratitis	10	9
Stinging	9	12
Conjunctival hyperemia	8	3
Blurred vision	8	8
Itching	8	8
Burning	7	8
Increased pigmentation of the Iris	7	0

Less than 1% of the patients treated with XALATAN required discontinuation of therapy because of intolerance to conjunctival hyperemia.

Table 2: Adverse Reactions That Were Reported in 1-5% of Patients Receiving Latanoprost

Ocular Events/Signs and Symptoms	Adverse Reactions (incidence (%))	
	Latanoprost (n=460)	Timolol (n=369)
Excessive tearing	4	6
Eyelid discomfort/pain	4	2
Dry eye	3	3
Eye pain	3	3
Eyelid margin crusting	3	3
Erythema of the eyelid	3	2
Photophobia	2	1
Eyelid edema	1	3
Systemic Events		
Upper respiratory tract infection/nasopharyngitis/influenza	3	3
Myalgia/arthritis/back pain	1	0.5
Rash/allergic skin reaction	1	0.3

The ocular event/signs and symptoms of blepharitis have been identified as “commonly observed” through analysis of clinical trial data.

6.2 Postmarketing Experience

The following reactions have been identified during postmarketing use of XALATAN in clinical practice. Because they are reported voluntarily from a population of unknown size, it is not always possible to reliably estimate their frequency or establish a causal relationship to drug exposure. The reactions, which have been chosen for inclusion due to either their seriousness, frequency of reporting, possible causal connection to XALATAN, or a combination of these factors, include:

Nervous System disorders: Dizziness; headache; toxic epidermal necrolysis

Eye Disorders: Eyelash and vellus hair changes of the eyelid (increased length, thickness, pigmentation, and number of eyelashes); keratitis; corneal edema and erosions; intraocular inflammation (iritis/uveitis); macular edema, including cystoid macular edema; trichiasis; periorbital and lid changes resulting in deepening of the eyelid sulcus; iris cyst; eyelid skin darkening; localised skin reaction on the eyelids; conjunctivitis; pseudopemphigoid of the ocular conjunctiva

Respiratory, Thoracic and Mediastinal Disorders: Asthma and exacerbation of asthma; dyspnea

Skin and Subcutaneous Tissue Disorders: Pruritus

Infections and Infestations: Herpes keratitis

Cardiac Disorders: Angina; palpitations; angina unstable

General Disorders and Administration Site Conditions: Chest pain

7 DRUG INTERACTIONS

In vitro studies have shown that precipitation occurs when eye drops containing thimerosal are mixed with XALATAN. If such drugs are used, they should be administered at least five (5) minutes apart.

The combined use of two or more prostaglandins, or prostaglandin analogs including XALATAN is not recommended. It has been shown that administration of these prostaglandin drug products more than once daily may decrease the IOP lowering effect or cause paradoxical elevations in IOP.

8 USE IN SPECIFIC POPULATIONS

8.1 Pregnancy

Teratogenic Effects: Pregnancy Category C.

Reproduction studies have been performed in rats and rabbits. In rabbits, an incidence of 4 of 16 dams had no viable fetuses at a dose that was approximately 80 times the maximum human dose, and the highest nonembryocidal dose in rabbits was approximately 15 times the maximum human dose.

There are no adequate and well-controlled studies in pregnant women. XALATAN should be used during pregnancy only if the potential benefit justifies the potential risk to the fetus.

8.3 Nursing Mothers

It is not known whether this drug or its metabolites are excreted in human milk. Because many drugs are excreted in human milk, caution should be exercised when XALATAN is administered to a nursing woman.

8.4 Pediatric Use

Safety and effectiveness in pediatric patients have not been established.

8.5 Geriatric Use

No overall differences in safety or effectiveness have been observed between elderly and younger patients.

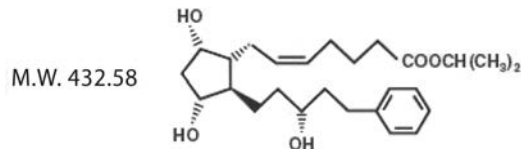
10 OVERDOSAGE

Intravenous infusion of up to 3 mcg/kg in healthy volunteers produced mean plasma concentrations 200 times higher than during clinical treatment and no adverse reactions were observed. Intravenous dosages of 5.5 to 10 mcg/kg caused abdominal pain, dizziness, fatigue, hot flushes, nausea, and sweating.

If overdosage with XALATAN occurs, treatment should be symptomatic.

11 DESCRIPTION

Latanoprost is a prostaglandin $F_{2\alpha}$ analogue. Its chemical name is isopropyl-(Z)-7-[(1R,2R,3R,5S)3,5-dihydroxy-2-[(3R)-3-hydroxy-5-phenylpentyl]cyclopentyl]-5-heptenoate. Its molecular formula is $C_{26}H_{40}O_5$ and its chemical structure is:



Latanoprost is a colorless to slightly yellow oil that is very soluble in acetonitrile and freely soluble in acetone, ethanol, ethyl acetate, isopropanol, methanol, and octanol. It is practically insoluble in water.

XALATAN (latanoprost ophthalmic solution) 0.005% is supplied as a sterile, isotonic, buffered aqueous solution of latanoprost with a pH of approximately 6.7 and an osmolality of approximately 267 mOsmol/kg. Each mL of XALATAN contains 50 mcg of latanoprost. Benzalkonium chloride, 0.02% is added as a preservative. The inactive ingredients are: sodium chloride, sodium dihydrogen phosphate monohydrate, disodium hydrogen phosphate anhydrous, and water for injection. One drop contains approximately 1.5 mcg of latanoprost.

12 CLINICAL PHARMACOLOGY

12.1 Mechanism of Action

Latanoprost is a prostanoid selective FP receptor agonist that is believed to reduce the intra-ocular pressure (IOP) by increasing the outflow of aqueous humor. Studies in animals and man suggest that the main mechanism of action is increased uveoscleral outflow. Elevated IOP represents a major risk factor for glaucomatous field loss. The higher the level of IOP, the greater the likelihood of optic nerve damage and visual field loss.

12.2 Pharmacodynamics

Reduction of the IOP in man starts about 3-4 hours after administration and maximum effect is reached after 8-12 hours. IOP reduction is present for at least 24 hours.

12.3 Pharmacokinetics

Absorption

Latanoprost is absorbed through the cornea where the isopropyl ester prodrug is hydrolyzed to the acid form to become biologically active.

Distribution

The distribution volume in humans is 0.16 ± 0.02 L/kg. The acid of latanoprost can be measured in aqueous humor during the first 4 hours, and in plasma only during the first hour after local administration. Studies in man indicate that the peak concentration in the aqueous humor is reached about two hours after topical administration.

Metabolism

Latanoprost, an isopropyl ester prodrug, is hydrolyzed by esterases in the cornea to the biologically active acid. The active acid of latanoprost reaching the systemic circulation is primarily metabolized by the liver to the 1,2-dinor and 1,2,3,4-tetranor metabolites via fatty acid β -oxidation.

Excretion

The elimination of the acid of latanoprost from human plasma is rapid ($t_{1/2} = 17$ min) after both intravenous and topical administration. Systemic clearance is approximately 7 mL/min/kg. Following hepatic β -oxidation, the metabolites are mainly eliminated via the kidneys. Approximately 88% and 98% of the administered dose are recovered in the urine after topical and intravenous dosing, respectively.

13 NONCLINICAL TOXICOLOGY

13.1 Carcinogenesis, Mutagenesis, Impairment of Fertility

Latanoprost was not carcinogenic in either mice or rats when administered by oral gavage at doses of up to 170 mcg/kg/day (approximately 2800 times the recommended maximum human dose) for up to 20 and 24 months, respectively.

Latanoprost was not mutagenic in bacteria, in mouse lymphoma, or in mouse micronucleus tests. Chromosome aberrations were observed *in vitro* with human lymphocytes. Additional *in vitro* and *in vivo* studies on unscheduled DNA synthesis in rats were negative.

Latanoprost has not been found to have any effect on male or female fertility in animal studies.

14 CLINICAL STUDIES

14.1 Elevated Baseline IOP

Patients with mean baseline IOP of 24 – 25 mmHg who were treated for 6 months in multi-center, randomized, controlled trials demonstrated 6 – 8 mmHg reductions in IOP. This IOP reduction with XALATAN 0.005% dosed once daily was equivalent to the effect of timolol 0.5% dosed twice daily.

14.2 Progression of Increased Iris Pigmentation

A 3-year open-label, prospective safety study with a 2-year extension phase was conducted to evaluate the progression of increased iris pigmentation with continuous use of XALATAN once-daily as adjunctive therapy in 519 patients with open-angle glaucoma. The analysis was based on observed-cases population of the 380 patients who continued in the extension phase. Results showed that the onset of noticeable increased iris pigmentation occurred within the first year of treatment for the majority of the patients who developed noticeable increased iris pigmentation. Patients continued to show signs of increasing iris pigmentation throughout the five years of the study. Observation of increased iris pigmentation did not affect the incidence, nature, or severity of adverse events (other than increased iris pigmentation) recorded in the study. IOP reduction was similar regardless of the development of increased iris pigmentation during the study.

16 HOW SUPPLIED/STORAGE AND HANDLING

XALATAN is a clear, isotonic, buffered, preserved colorless solution of latanoprost 0.005% (50 mcg/mL). It is supplied as a 2.5 mL solution in a 5 mL clear low density polyethylene bottle with a clear polyethylene dropper tip, a turquoise high density polyethylene screw cap, and a tamper-evident clear low density polyethylene overcap.

2.5 mL fill, 0.005% (50 mcg/mL): Package of 1 bottle: NDC 0013-8303-04

Storage: Protect from light. Store unopened bottle(s) under refrigeration at 2° to 8°C (36° to 46°F). During shipment to the patient, the bottle may be maintained at temperatures up to 40°C (104°F) for a period not exceeding 8 days. Once a bottle is opened for use, it may be stored at room temperature up to 25°C (77°F) for 6 weeks.

17 PATIENT COUNSELING INFORMATION

Potential for Pigmentation

Advise patients about the potential for increased brown pigmentation of the iris, which may be permanent. Inform patients about the possibility of eyelid skin darkening, which may be reversible after discontinuation of XALATAN [see *Warnings and Precautions* (5.1)].

Potential for Eyelash Changes

Inform patients of the possibility of eyelash and vellus hair changes in the treated eye during treatment with XALATAN. These changes may result in a disparity between eyes in length, thickness, pigmentation, number of eyelashes or vellus hairs, and/or direction of eyelash growth. Eyelash changes are usually reversible upon discontinuation of treatment.

Handling the Container

Instruct patients to avoid allowing the tip of the dispensing container to contact the eye or surrounding structures because this could cause the tip to become contaminated by common bacteria known to cause ocular infections. Serious damage to the eye and subsequent loss of vision may result from using contaminated solutions [see *Warnings and Precautions* (5.6)].

When to Seek Physician Advice

Advise patients that if they develop an intercurrent ocular condition (e.g., trauma or infection) or have ocular surgery, or develop any ocular reactions, particularly conjunctivitis and eyelid reactions, they should immediately seek their physician's advice concerning the continued use of the multiple-dose container.

Use with Contact Lenses

Advise patients that XALATAN contains benzalkonium chloride, which may be absorbed by contact lenses. Contact lenses should be removed prior to administration of the solution. Lenses may be reinserted 15 minutes following administration of XALATAN.

Use with Other Ophthalmic Drugs

If more than one topical ophthalmic drug is being used, the drugs should be administered at least five (5) minutes apart.

Distributed by



Pharmacia & Upjohn Co

Division of Pfizer Inc, NY, NY 10017

Pfizer Manufacturing Belgium NV
Puurs, Belgium

LAB-0135-13.0